

# IGEBA EVO-35

Thermal Fog Generator in HD-PE

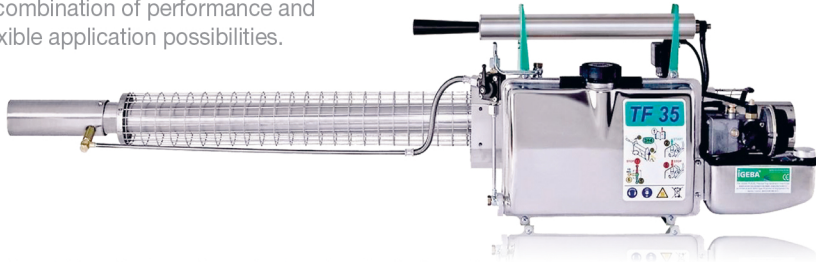


**IGEBA**<sup>®</sup> 

# IGEBA TF-35

## The Portable Classic

A combination of performance and flexible application possibilities.



\*This insecticide application equipment has been found by the Vector Research Control Unit (University of Science Malaysia, USM) to comply with the requirements of the WHO Equipment for Vector Control specification guidelines WHO/VBC/89.973\* (TF35/E)

An excellent combination of expertise, performance and highest quality standards

The IGEBA TF35 is the master of its class and the first choice for professional application. Only high-quality materials, such as stainless steel are used and combined with the best compounds available. This leads to a long life of the equipment and ensures compatibility for the daily demands. Manufactured after international standards and requirements this unit is appreciated around the world.

- Patented and reliable ignition system without spark plug for increased user-friendliness
- Solution and fuel tank as well as the fog tube and solution lines made of stainless steel
- Reliable ignition system without spark plug
- Covered air intake valve, providing a silencer effect and protection against dust and solution particles.

### Technical specifications

<b>Weight in kg, empty but ready for use</b>	7.9 kg
<b>Dimensions L x W x H in cm</b>	137.5 x 27 x 34
<b>Solution tank capacity in l</b>	5.7
<b>Fuel tank capacity in l</b>	1.2
<b>Fuel consumption, approx. in l/h</b>	2.0
<b>Performance of combustion chamber in KW/HP</b>	18.3/24.8
<b>Maximum flow rate, approx. in l/h</b>	42
<b>Effective horizontal reach, indoors, approx. in m (water-based with carrier, i.e. NEBOL)</b>	40
<b>(oil-based)</b>	> 100
<b>Power supply</b>	Flashlight batteries 4 x 1.5 V

Considering the maximum flow rate, an operator can treat at a flow rate of 1 litre/2.500 m<sup>3</sup> up to 105.000 m<sup>3</sup>/h or 3.708.000 ft<sup>3</sup>/h.



Bent Fog Tube accessory is available for sewage treatment using TF-35.

# IGEBA TF-34

## The Ideal Solution for Small Indoor Spaces



\*The equipment has been found by the International Pesticide Application Research Centre (IPARC) (Imperial College, Ascot, UK) to comply with the requirements of the WHO Equipment for Vector Control specification guidelines WHO/HTM/NTD/WHOPES/2010.9 REVISED EDITION 2010\* (TF34/E)

Only 78cm total length and an empty weight of 6.6 kg, TF 34 is the smallest and lightest Thermal Fog Generator of the IGEBA product range. It was designed with the main objective of indoor fogging and is characterized by its compact size, light weight and excellent emission values. Of course it can also be used outdoors.

### Technical specifications

<b>Weight in kg, empty but ready for use</b>	6.6 kg
<b>Dimensions L x W x H in cm</b>	78 x 27 x 34
<b>Solution tank capacity in l</b>	5.7
<b>Fuel tank capacity in l</b>	1.2
<b>Fuel consumption, approx. in l/h</b>	1.1
<b>Performance of combustion chamber in KW/HP</b>	10/13.6
<b>Maximum flow rate, approx. in l/h</b>	25
<b>Effective horizontal reach, indoors, (oil-based formulations) approx. in m</b>	> 100
<b>Power supply</b>	Flashlight batteries 4 x 1.5 V

Exhaust gas value	Average	Maximum	Limiting value
Nitric oxide NO	1.9 ppm*	2.8 ppm*	5 ppm*
Carbon monoxide CO	5.1 ppm*	8.0 ppm*	30 ppm*

\*in a closed room (70 m<sup>3</sup>) after 12 min.

Excellent exhaust emission confirmed by the independent German test laboratory "DEKRA", January 2003

These results ensure the harmlessness of the exhaust gases of the TF 34. This is an important requirement for the unobjectionable use in limited spaces, i.e. rooms, flats and houses.

### Also Available



Special W fog tube is available for the application of water-based formulations.

